



INSTRUCTION BULLETIN

No. 340849
Machine: M20
Published: 04-2007
Rev. 01

NOTE: DO NOT DISCARD the Parts List from the Instruction Bulletin. Place the Parts List in the appropriate place in the machine manual for future reference. Retaining the Parts List will make it easier to reorder individual parts and will save the cost of ordering an entire kit.

NOTE: Numbers in parenthesis () are reference numbers for parts listed in Bill of Materials.

Installation instructions for **kit number 9003444**

SYNOPSIS:

This kit contains the parts needed to replace the Thermo-Sentry sensor on M20 machines. Please follow step-by-step instructions.

SPECIAL TOOLS / CONSIDERATIONS: NONE

(Estimated time to complete: 1 hour)

PREPARATION:

1. Park the machine on a clean level surface and set the parking brake.
2. Raise the hopper to the middle support position and engage the hopper support pin. Stay clear of the moving hopper. Refer to the Operators Manual for additional instructions and safety information. Refer to Fig. 1.



WARNING: Raised hopper may fall. Engage hopper support pin.



WARNING: Lift arm pinch point. Stay clear of hopper lift arms.

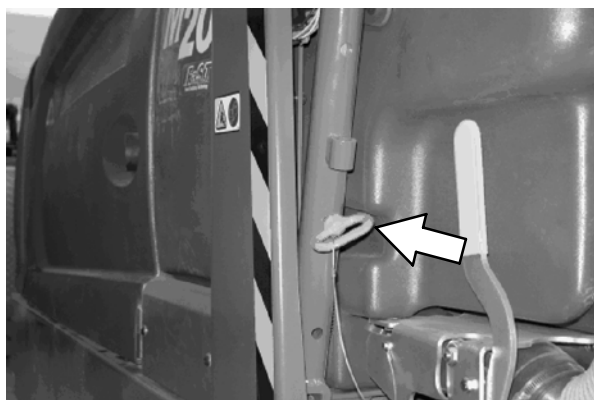


FIG. 1

3. Turn off the machine and remove the key.

FOR SAFETY: Before leaving or servicing machine, stop on level surface, turn off machine, and remove key.

4. First disconnect the negative terminal and then the positive terminal from the battery.



WARNING: Always disconnect battery cables from machine before working on electrical components.

5. Disconnect all hoses and cables from the hopper filter cover and remove the cover from the hopper. Refer to the Operators Manual for additional information.

INSTALLATION:

1. Disconnect the wire harness inside the hopper filter cover from the Thermo-Sentry sensor and remove the Thermo-Sentry sensor from the hopper filter cover. Discard the Thermo-Sentry sensor and hardware. Refer to Fig. 2.

NOTE: Disregard Step 2 and Step 3 if all holes shown in Fig. 3 are already drilled into the hopper filter cover.

2. Drill one 5/32" hole into the hopper filter cover, place the Thermo-Sentry sensor (1) onto the hopper filter cover, and use the sensor as a template to drill the other 5/32" hole. Refer to Fig. 3.

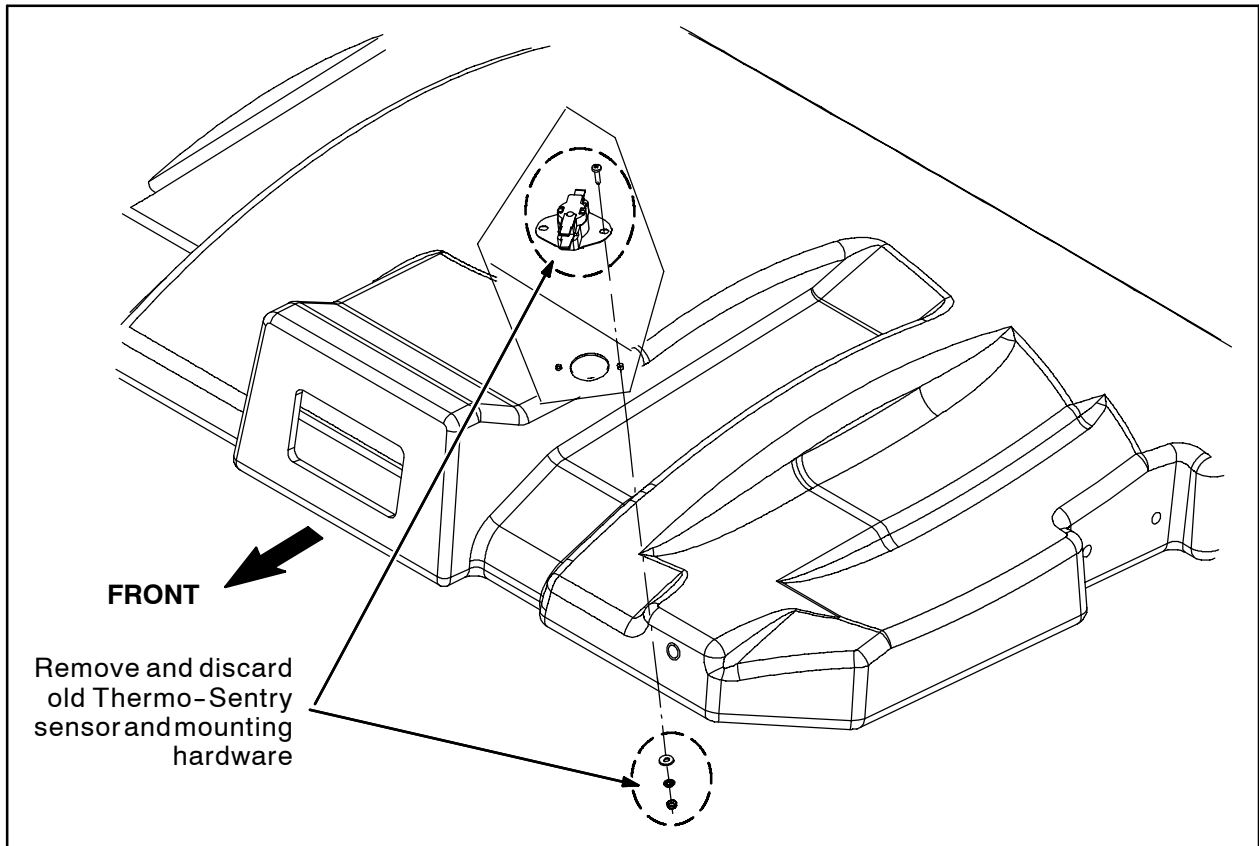


FIG. 2

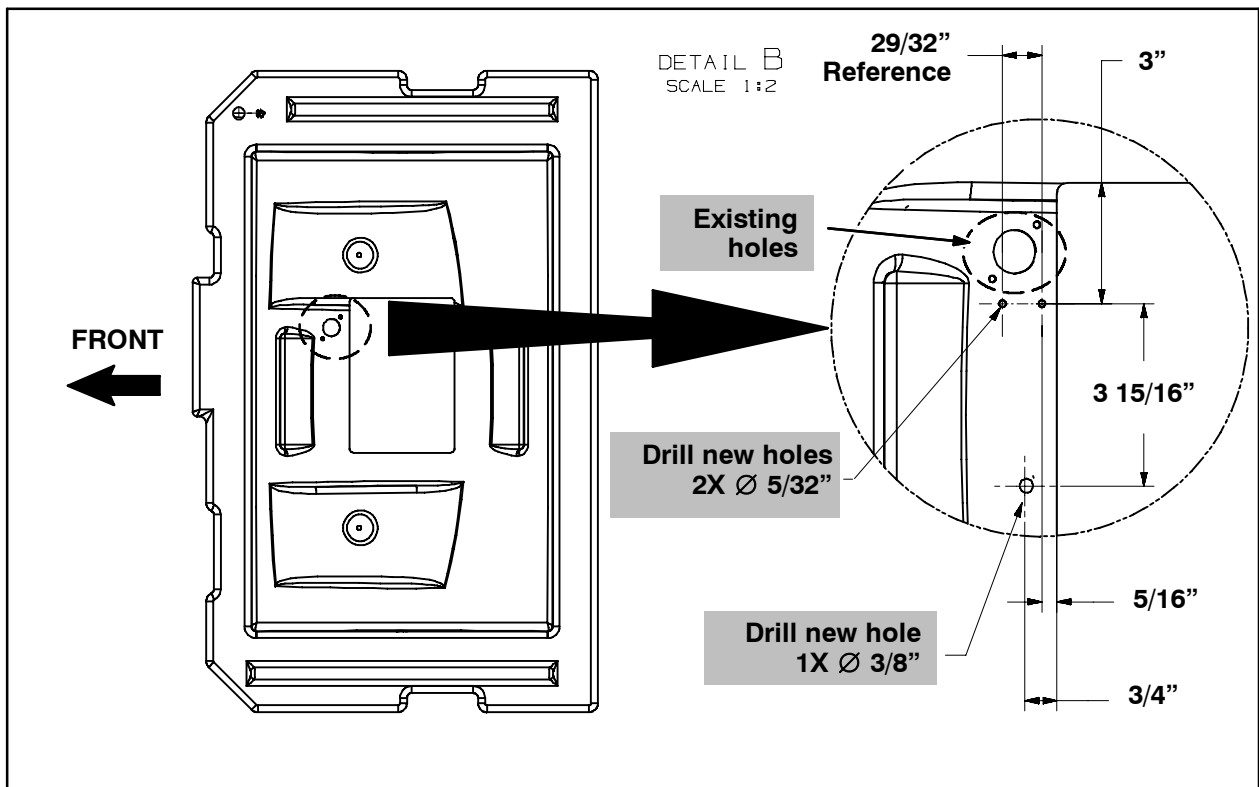


FIG. 3

3. Drill a 3/8" hole into the hopper filter cover. Refer to Fig. 3.
4. Use two pan screws (2), two flat washers (3), two lock washers (4), and two hex nuts (5) to install the new Thermo-Sentry sensor (1) onto the hopper filter cover. Refer to Fig. 4.
5. Connect the wire harness inside the hopper filter cover to the Thermo-Sentry sensor (1). Refer to Fig. 4.
6. Route the wires from the Thermo-Sentry sensor (1) past the 3/8" hole in the upper filter cover and use a cable tie (6) to secure the wires to the cover. Refer to Fig. 4.
7. Reinstall the hopper filter cover onto the hopper and reconnect all previously disconnected hoses and cables. Refer to the Operators Manual for instructions how to reinstall the hopper filter cover.
8. Reconnect the battery cables to the batteries. Reconnect the positive terminal first and then the negative terminal.
9. Remove the hopper support pin, start the machine, and lower the hopper. Stay clear of the moving hopper. Refer to the Operators Manual for additional instructions and safety information.



WARNING: Lift arm pinch point. Stay clear of hopper lift arms.

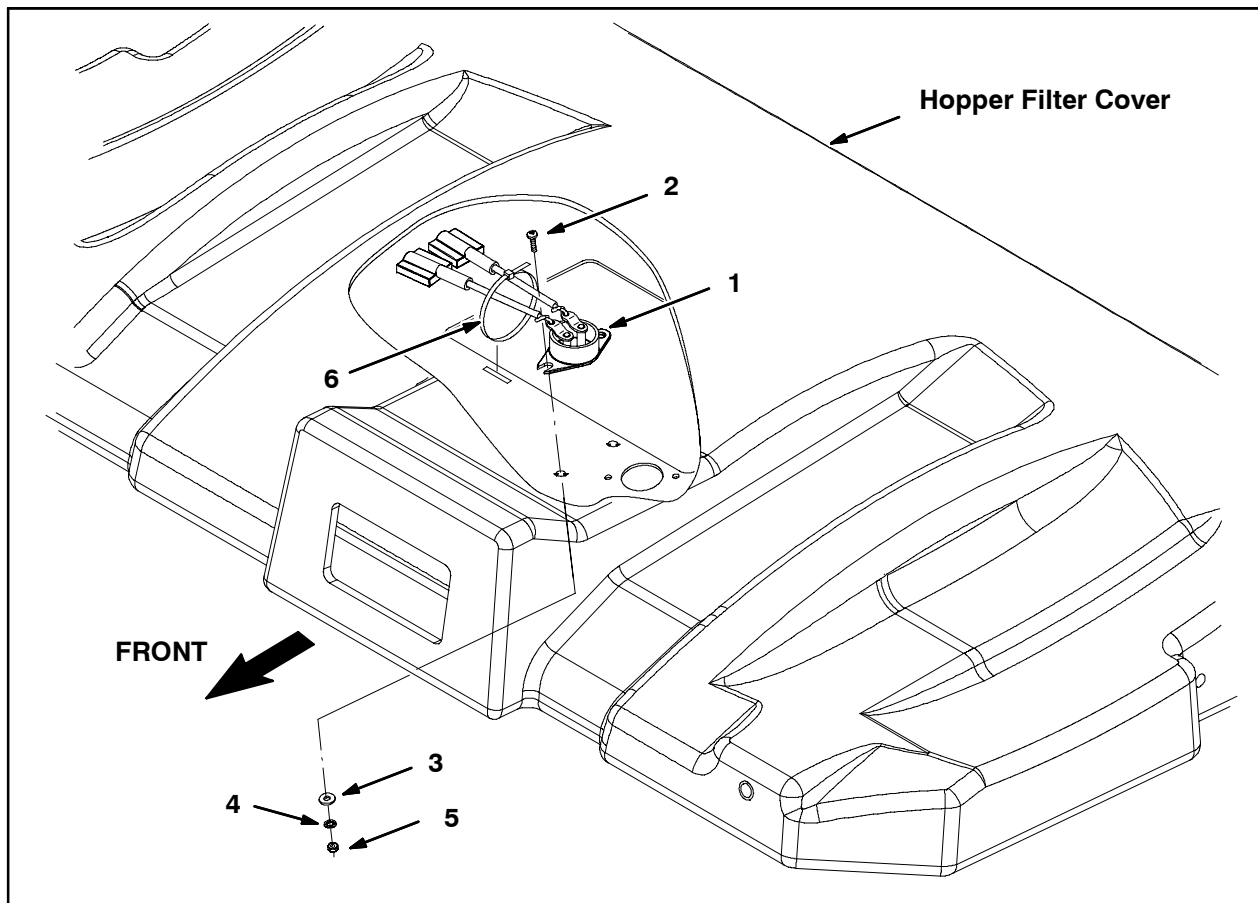


FIG. 4

Bill of Materials for Sensor Kit, Repair, Thermo-Sentry [M20]-9003444

	Ref.	Tennant Part No.	Description	Qty.
▽		9003444	Sensor Kit, Repair, Thermo-Sentry [M20]	1
▲	1	1036611	Switch, Temp [160F]	1
▲	2	06922	Screw, Pan, M3 X 0.50 X 20, 4.8	2
▲	3	19064	Washer, Flat, #06	2
▲	4	32975	Washer, Lock, Int, #06	2
▲	5	01754	Nut, Hex, Std, M3 X .050, 8	2
▲	6	763116	Tie, Cable, Nyl, 15.3L W 4.5 Max D	1

TENNANT COMPANY
P. O. Box 1452
Minneapolis, MN 55440-1452